

## classic features

### Hydrotherapy System

Comfort seating designed with hydrotherapy jets, positioned for customized massage targeting multiple areas of your body.

### LED Illumination

Light up the night with interior and exterior LED perimeter lighting, along with an illuminated waterfall, creating a fun and inviting spa experience.

### Weathershield Thermal Cover

Manufactured to be environmentally superior, made with 100% polyester, our locking Weathershield cover is 74% lighter and 3x stronger than standard vinyl covers.

## classic upgrades

### Control At Your Fingertips

No matter where you are, you can access your hot tub controls from the Control My Spa app letting you set the temperature, turn pumps on and off and even set filtration cycles.

### A Sound Choice

Stream your favourite music with our optional bluetooth audio system and create a total sensory experience for your body, mind and soul.

### Neutralize Contaminants

Spend more time with family and friends, and less time balancing your water chemistry with either the Factory Installed Ozone or UV/O<sub>3</sub> Deluxe Water Management System.

## durable design

### From the Ground Up

Each spa is built with a galvanized SureSteel support structure and insulated bottom tray for complete durability, integrity and total equipment protection.

### Layered Thermal Retention

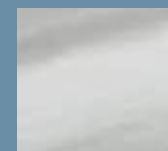
Manufactured with premium acrylic, each shell is coated with vinyl-ester resin and additional layers of fiberglass for maximum thickness and strength.

### Quality Eco-Friendly Insulation

Every spa is built with our proprietary GreenGuard Rockwool insulation. This means your spa has superior noise absorption qualities, won't absorb or retain moisture and won't act as a food source for bacteria or small animals.

## colour selections

### STANDARD ACRYLIC



Silver White Marble

### DELUXE ACRYLIC COLOUR UPGRADE



Mediterranean Sunset



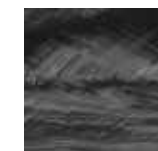
Cosmic Swirl



Espresso



Oyster Opal

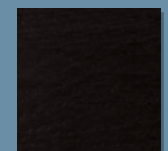


Storm Clouds\*



Mayan Copper\*

### PANEL OPTIONS



Black



Grey



Coffee

### WEATHERSHIELD COVER



Black

*\*While Supplies Last*

## classic collection



© 2021 Leisure Manufacturing Inc. All rights reserved. Leisure Manufacturing Inc. may make product modifications and enhancements. Specifications may change without notice. Products may not be exactly as shown. International products may be configured differently to meet local electrical requirements.

317 South Service Road West, Grimsby, Ontario, Canada L3M 4E8  
Tel: 905.309.1800 • Fax: 905.309.1815 • [www.sunrisespas.com](http://www.sunrisespas.com)



Your Authorized Sunrise Spas Dealer



LM-CC-2021



## S SERIES

### STANDARD FEATURES

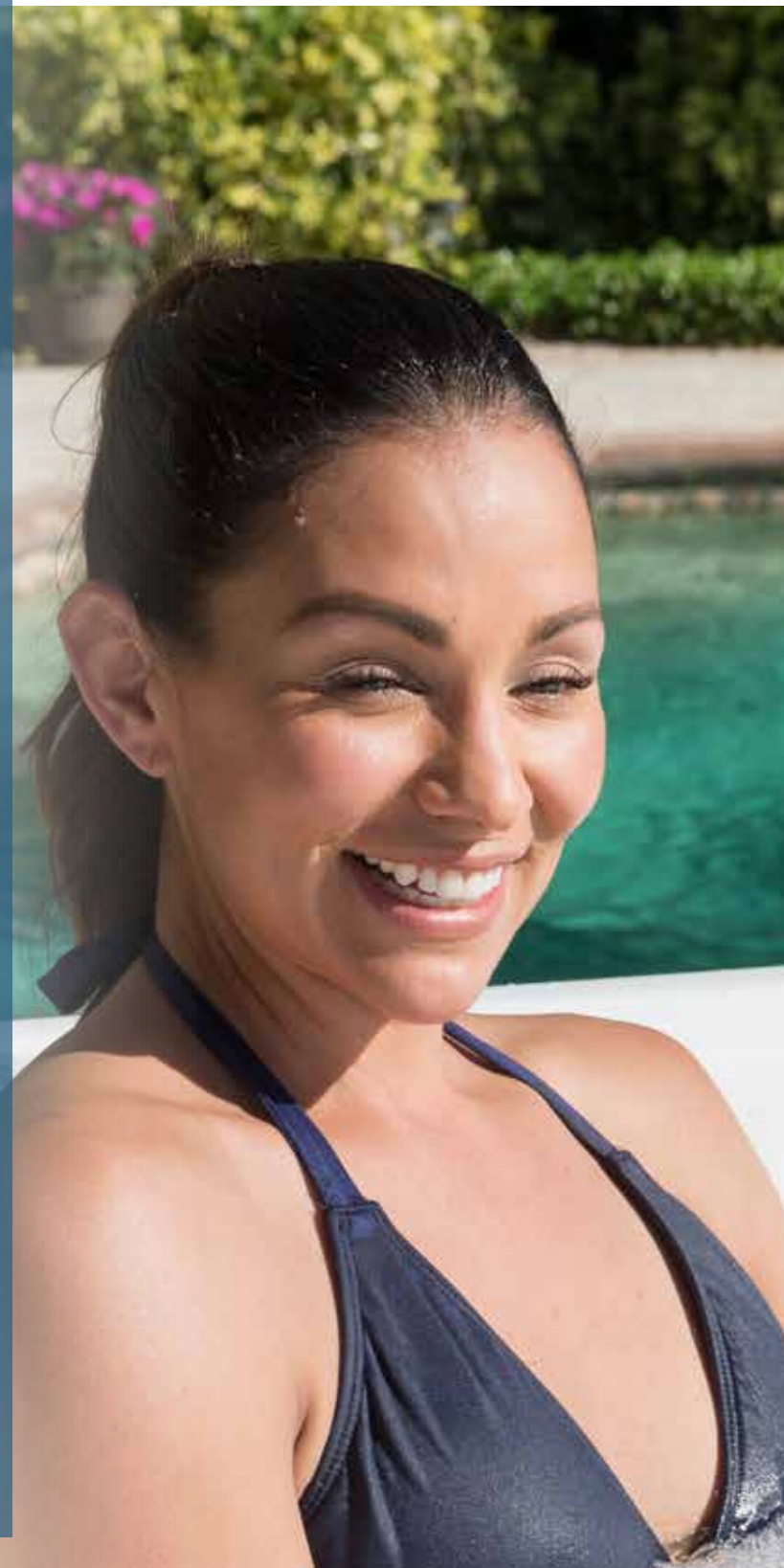
- Two-Tone Air Controls
- LED Multi-Colour Safety Light
- LED Illuminated Waterfall
- LED Perimeter Lighting
- LED Exterior Lighting with Deluxe Corners
- Ozone Ready
- Black Weathershield Cover (5"-3" Taper)
- Thermoformed ABS Bottom Tray
- Galvanized SureSteel Support Structure
- Polysteel Exterior Cabinetry
- GreenGuard Rockwool Insulation
- User Friendly Electronic Controls
- 4kW Heating System
- (1) 4.5HPR Dual Speed Pump (770 & 780 models only)
- (2) 5.0SPL Dual Speed Pump (870, 880, 970 & 980 models only)
- 100 Sq. Ft. Filtration System

## SX SERIES

### ADDED STANDARD FEATURES

*(870, 880, 970 & 980 only)*

- Stainless Steel Hydrotherapy Jets
- LED Illuminated Deck Controls
- UV/O<sub>3</sub> Deluxe Water Management System



### 770 S Series 230V

- Seats 5 with Lounge
- 78" x 78" x 36"
- 317 US Gallons / 1,200 Litres
- 26 Two-Tone Hydrotherapy Jets
- (1) 4.5HPR Dual Speed Pump



### 870 S Series 230V

- Seats 6 with Lounge
- 84" x 84" x 36"
- 392 US Gallons / 1,484 Litres
- 50 Two-Tone Hydrotherapy Jets
- (2) 5.0SPL Dual Speed Pumps



### 970 S Series 230V

- Seats 7 with Lounge
- 90" x 94" x 36"
- 455 US Gallons / 1,722 Litres
- 52 Two-Tone Hydrotherapy Jets
- (2) 5.0SPL Dual Speed Pumps



### 780 S Series 230V

- Seats 6
- 78" x 78" x 36"
- 355 US Gallons / 1,268 Litres
- 26 Two-Tone Hydrotherapy Jets
- (1) 4.5HPR Dual Speed Pumps



### 880 S Series 230V

- Seats 6
- 84" x 84" x 36"
- 374 US Gallons / 1,416 Litres
- 50 Two-Tone Hydrotherapy Jets
- (2) 5.0SPL Dual Speed Pumps



### 980 S Series 230V

- Seats 6
- 90" x 94" x 36"
- 463 US Gallons / 1,753 Litres
- 61 Two-Tone Hydrotherapy Jets
- (2) 5.0SPL Dual Speed Pumps

## 115V PLUG & PLAY

Choose the 115V Plug & Play version for simple installation

*Available on 770 S & 780 S only*



Built-in 115V GFCI Plug Kit



Equipped with a 1kW Heating System



Equipped with (1) 1.5HPR Dual Speed Pump Only

## UPGRADE TO THE SX SERIES

SX Models Include these Premium Features

*Available on 870 SX, 880 SX, 970 SX & 980 SX only*



Two-Tone Stainless Steel Hydrotherapy Jets



LED Illuminated Deck Controls



UV/O<sub>3</sub> Deluxe Water Management System